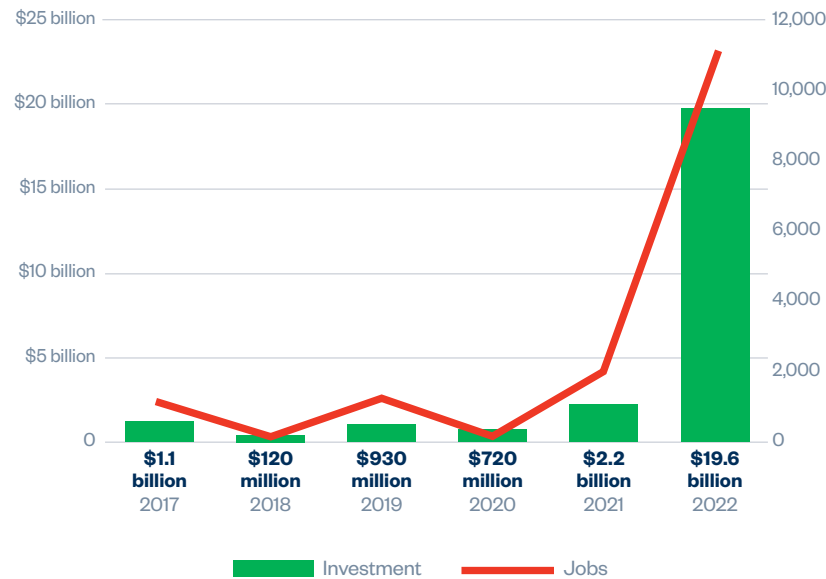


Jobs

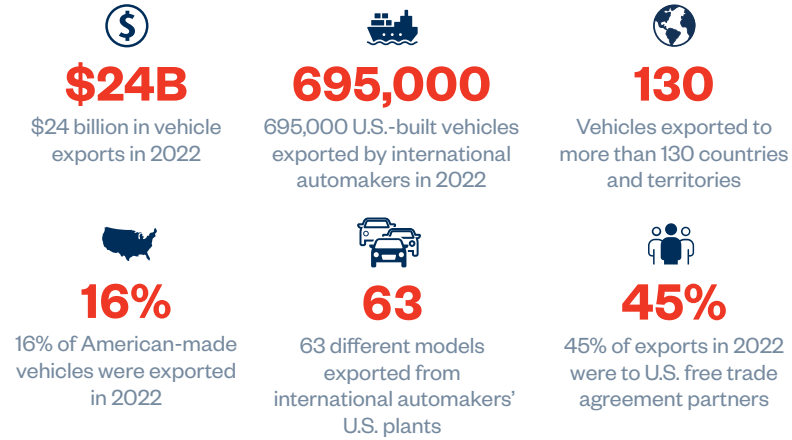


Billions Invested by International Automakers in Green Manufacturing Create New Jobs



Source: Autos Drive America analysis of company press releases

Trade

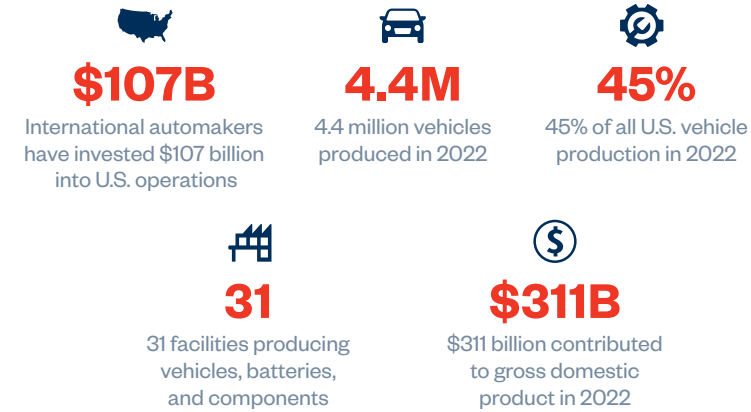


Trade Supports Jobs in Manufacturing States

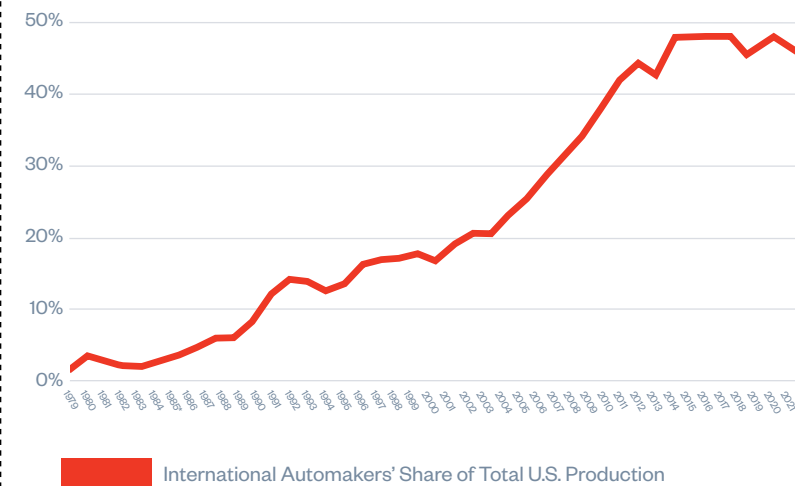
State	Total Jobs	2022 Production	Models Exported
Alabama	17,998	968,704	Honda: Odyssey, Passport, Pilot, Ridgeline Hyundai: Elantra, Santa Cruz, Santa Fe, Sonata Mercedes-Benz: EQE SUV, EQS SUV, GLE Coupe, GLE SUV, GLS SUV Mazda: CX-50 Toyota: Corolla Cross
Georgia	6,047	340,000	Kia: K5, Sorento, Sportage, Telluride
Indiana	17,267	782,900	Honda: Civic, CR-V, CR-V Hybrid Subaru: Ascent, Impreza, Legacy, Outback Toyota: Highlander, Highlander Hybrid, Sienna Hybrid
Kentucky	11,312	445,136	Toyota: Avalon, Avalon Hybrid, Camry, Camry Hybrid, Lexus ES, Lexus ES Hybrid
Mississippi	7,334	378,764	Nissan: Altima, Frontier, Titan Toyota: Corolla
Ohio	16,689	416,379	Honda: Accord, Accord Hybrid, CR-V, CR-V Hybrid, Acura Integra, Acura MDX, Acura NSX, Acura RDX, Acura TLX
South Carolina	15,420	485,291	BMW: X3, X3 PHEV, X4, X5, X5 PHEV, X6, X7, XM PHEV Volvo: S60
Tennessee	16,972	413,746	Nissan: LEAF, Maxima, Murano, Pathfinder, Rogue, Infiniti QX60 Volkswagen: Atlas
Texas	12,249	126,189	Toyota: Sequoia, Tundra, Tundra Hybrid

Source: Production data from WardsAuto InfoBank for BMW Group, Honda, Hyundai, Kia, Mazda, Mercedes-Benz, Mitsubishi Motors, Nissan, Subaru, Toyota, Volkswagen Group, and Volvo Cars.

Growth



International Automakers' Share of U.S. Auto Production Has Grown from 1% in 1979 to 45% in 2022



*Passenger cars only before 1985. Passenger cars and light trucks 1985-2022

Sources used to compile the data include the 2022 Autos Drive America and AIADA Economic Impact Survey, the 2022 Autos Drive America Workforce Development Survey, AIADA's membership roster, NADA DATA, WardsAuto InfoBank, IHS Markit New Vehicle Registration Data.

Vehicles are made, built, or manufactured in the United States using domestic and globally sourced parts. U.S. supplier purchases include parts and materials as well as goods and services.

Advanced technology vehicles (green) include all battery electric vehicles (BEV), hybrid electric vehicles (HEV), plug-in hybrid electric vehicles (PHEV), and fuel cell vehicles (FCEV).

Indirect economic impacts derived by SCOUT Economics using direct employment, dealer employment, and auto parts employment multipliers from the IMPLAN input-output model.

Source: The 2023 Autos Drive America Workforce Development Survey



For more than 60 years, international automakers have been a part of the fabric of U.S. automotive manufacturing.



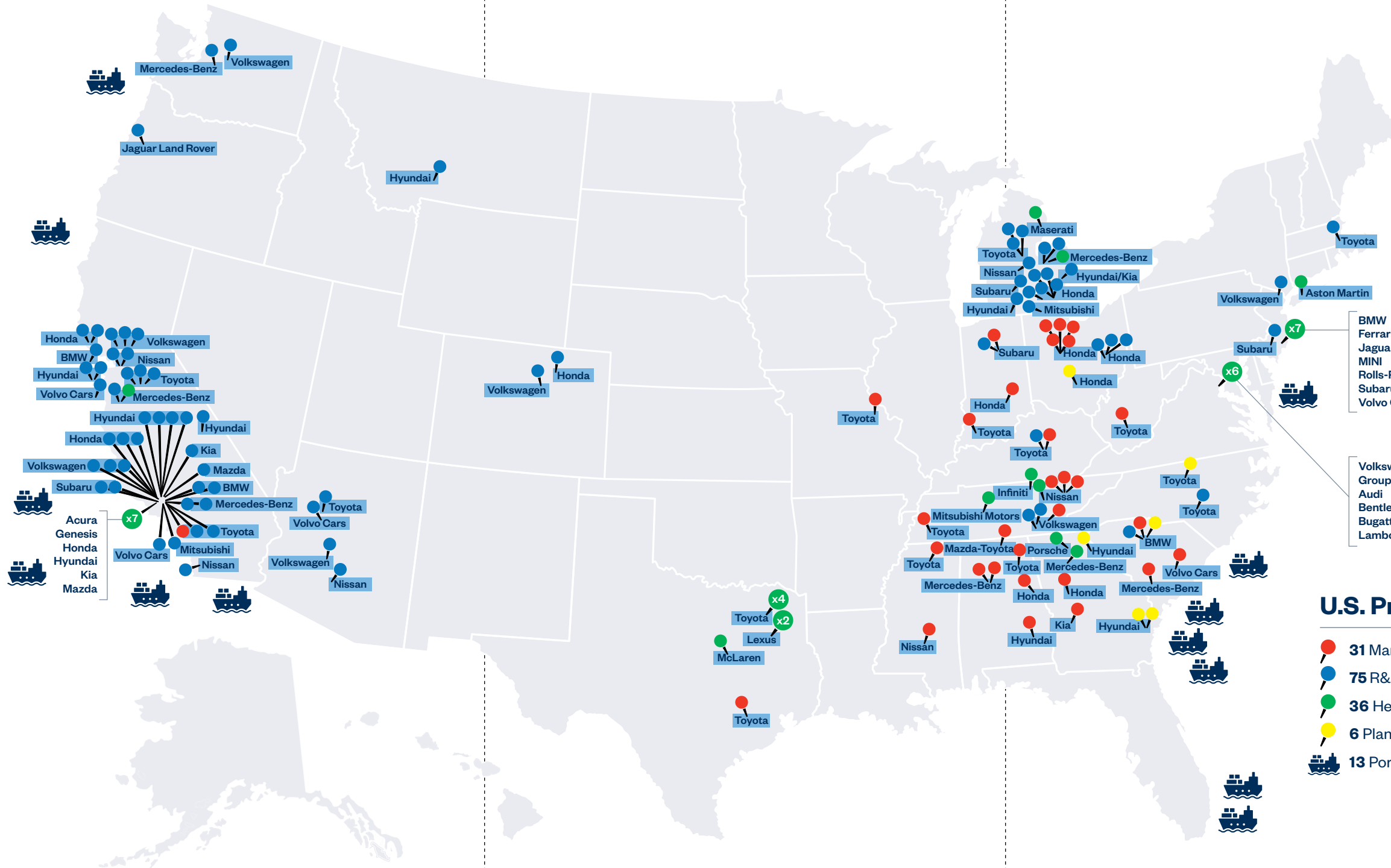
Autos Drive America's members have a tremendous impact on the U.S. economy, providing community investment, economic growth, and good-paying careers.



www.AutosDriveAmerica.org



International Automakers Across America

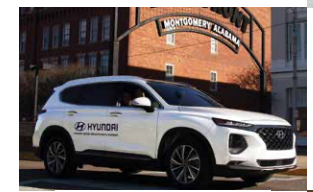


U.S. Presence

- 31 Manufacturing Plants
- 75 R&D Facilities
- 36 Headquarters
- 6 Plants Coming Soon
- 13 Ports



HONDA



TOYOTA



VOLKSWAGEN
GROUP OF AMERICA



VOLVO

